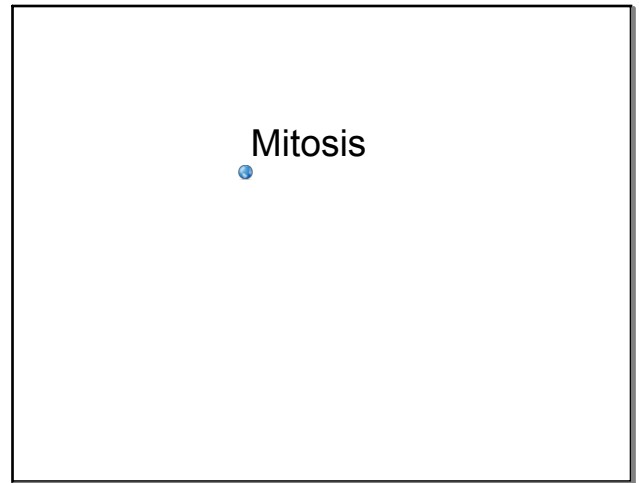
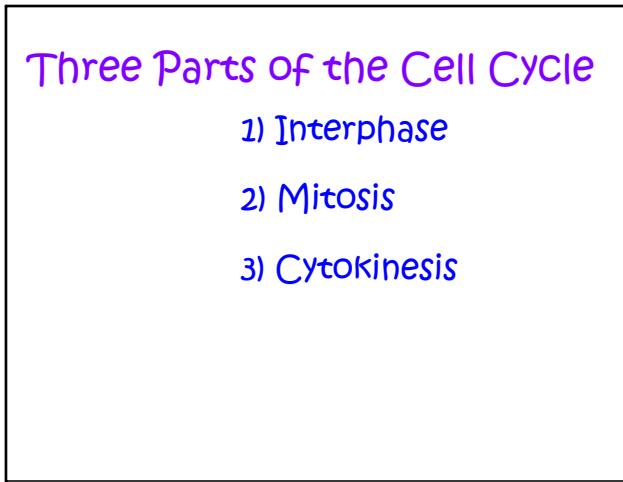


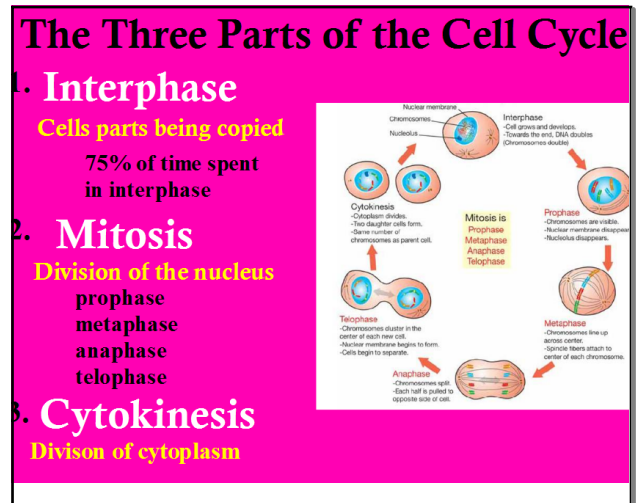
Dec 3-11:27 AM



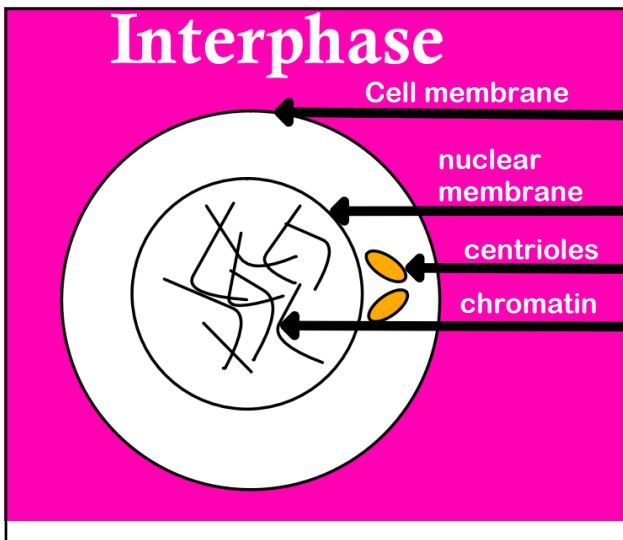
Dec 3-11:14 AM



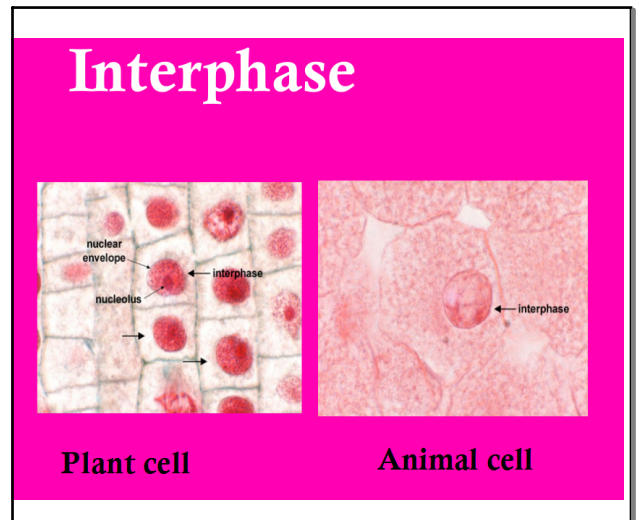
Dec 3-11:29 AM



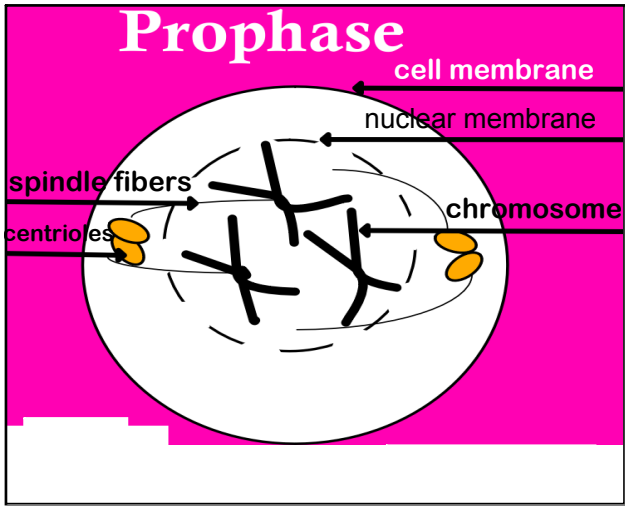
Dec 3-11:33 AM



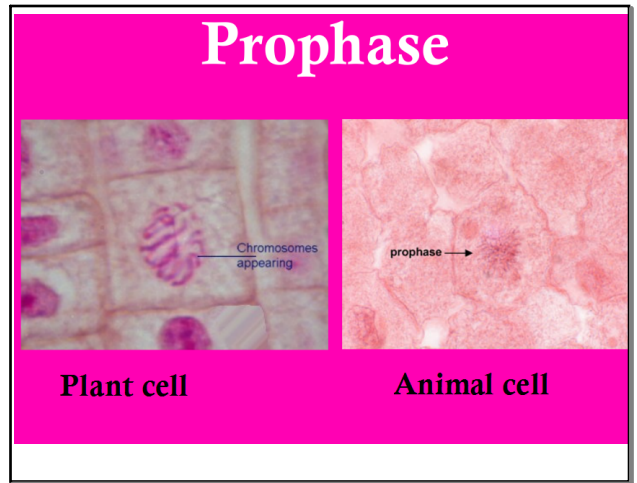
Dec 3-11:33 AM



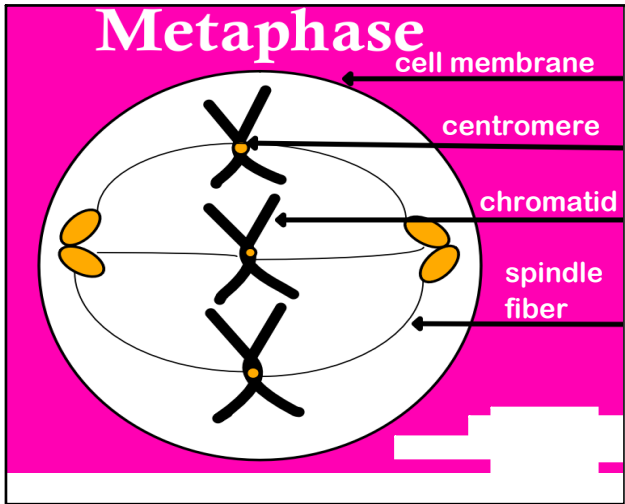
Dec 3-11:55 AM



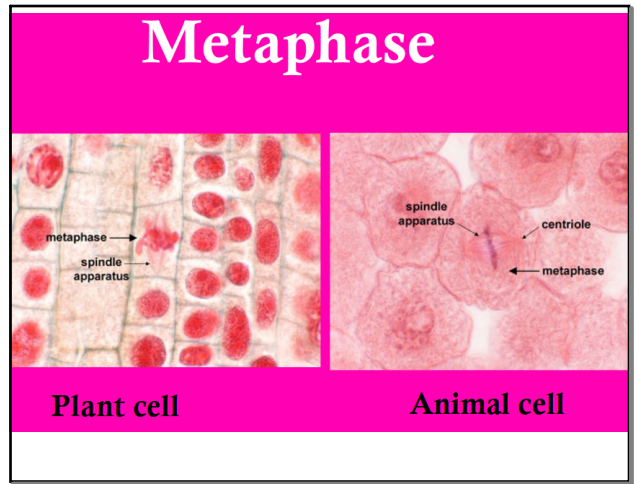
Dec 3-11:56 AM



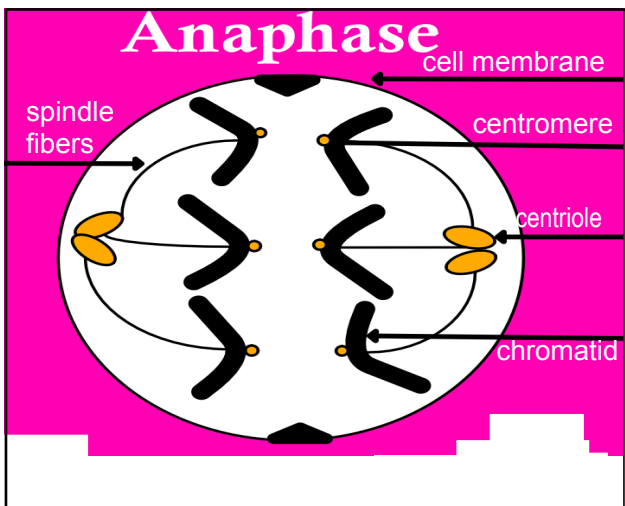
Dec 3-12:01 PM



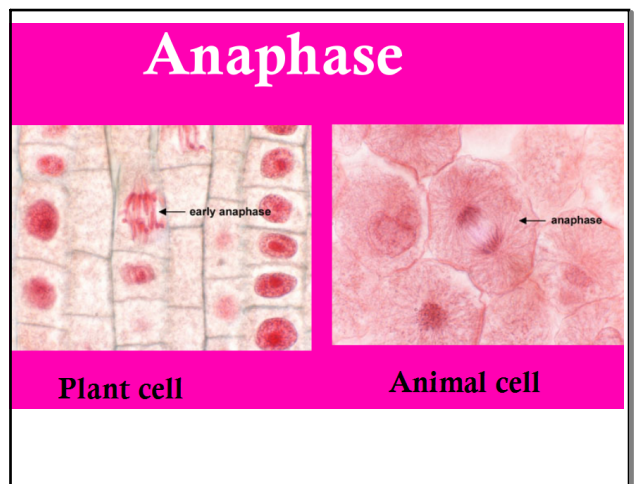
Dec 3-12:01 PM



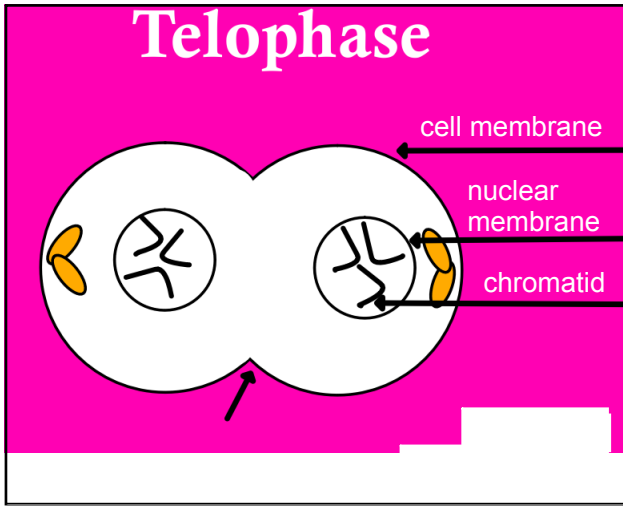
Dec 3-12:06 PM



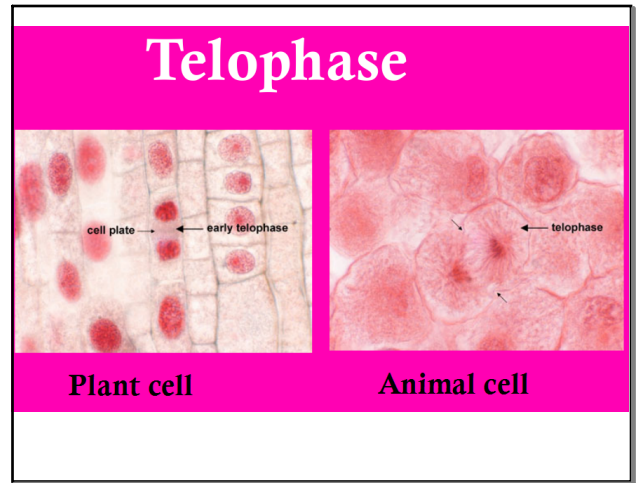
Dec 3-12:07 PM



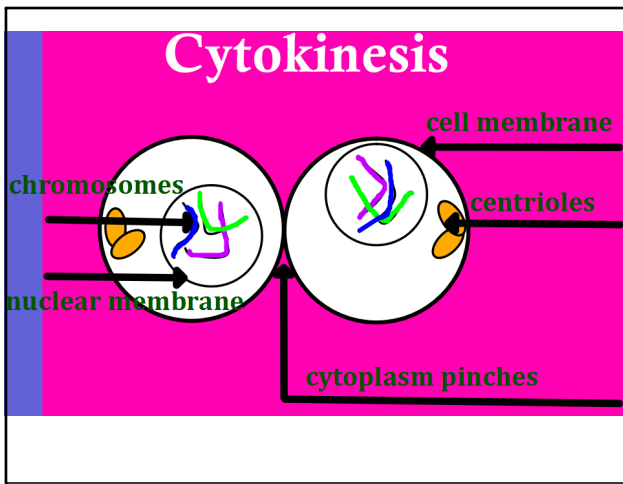
Dec 3-12:10 PM



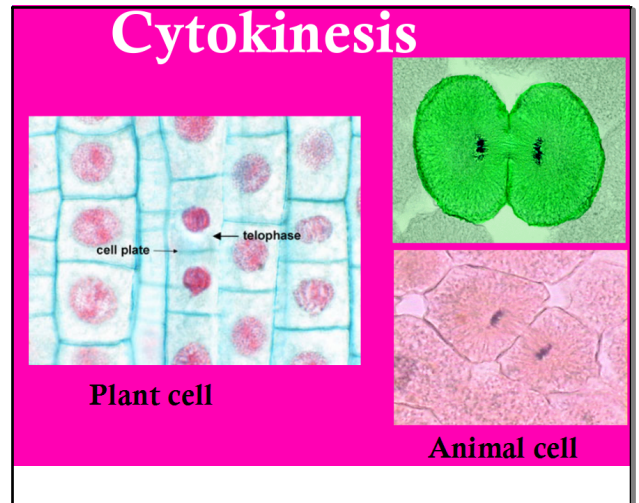
Dec 3-12:10 PM



Dec 3-12:12 PM



Dec 3-12:13 PM



Dec 3-12:16 PM

**Interphase**

The nucleus can be clearly seen.  
The chromosomes can not be seen,  
but are actively duplicating  
themselves.

Dec 3-12:16 PM

**Prophase**

Chromosomes condense and are fully visible.  
The nucleus and nucleolus disintegrate.  
Centrioles move to opposite poles and  
spindle fibers stretch across the cell.

Dec 3-12:17 PM

## Metaphase

The double stranded chromosomes line-up across the center (equator) of the cell. Each centromere becomes attached to a spindle fiber.

Dec 3-12:17 PM

## Anaphase

Each centromere divides and the two sister chromatids are pulled to opposite poles by the spindle fibers shortening.

Dec 3-12:18 PM

## Telophase

The centrioles and spindle fibers disappear and the chromosomes begin to unwind. Nuclear membrane forms around each mass of chromosomes and the nucleolus appears.

Dec 3-12:18 PM

### Short Answer:

1. What is cytokinesis?

The process in which the cytoplasm of a single eukaryotic cell divides.

2. How is cytokinesis different in animal and plant cells?

In animal cells, the cell membrane and cytoplasm pinches in the middle and the cells separate.

In plant cells, a cell plate forms in the middle and moves from the center of the cell outward. A new cell wall develops from the cell membrane.

Dec 3-12:18 PM